

# REGISTRATION

Please return this form by **April 12, 2008** with the \$15-per-participant payment (\$12 per participant for Museum members). Payment is by cash, credit card, or check payable to *The Brick Store Museum*. Remit to:

The Brick Store Museum  
117 Main Street  
Kennebunk, ME 04043  
Attn: *Working Backwards*

*Extra forms are also available online.*  
See [www.brickstoremuseum.org/events.shtml](http://www.brickstoremuseum.org/events.shtml) for details.  
Questions? Call the Museum at 207.985.4802

Payment Options:

Cash enclosed: \$ \_\_\_\_\_  
 Check (payable to *The Brick Store Museum*); \$ \_\_\_\_\_  
 Credit card:  VISA  MasterCard  Discover  
Card # \_\_\_\_\_  
Expiration Date: \_\_\_\_/\_\_\_\_  
Amount to be charged: \$ \_\_\_\_\_  
Authorized Signature \_\_\_\_\_

Name(s) \_\_\_\_\_

Participant(s) Age or Grade level \_\_\_\_\_

Mailing Address \_\_\_\_\_

Phone # \_\_\_\_\_

Email \_\_\_\_\_  
(to receive confirmation of your registration and advance notice of future educational programs)

Emergency Contact name and # \_\_\_\_\_

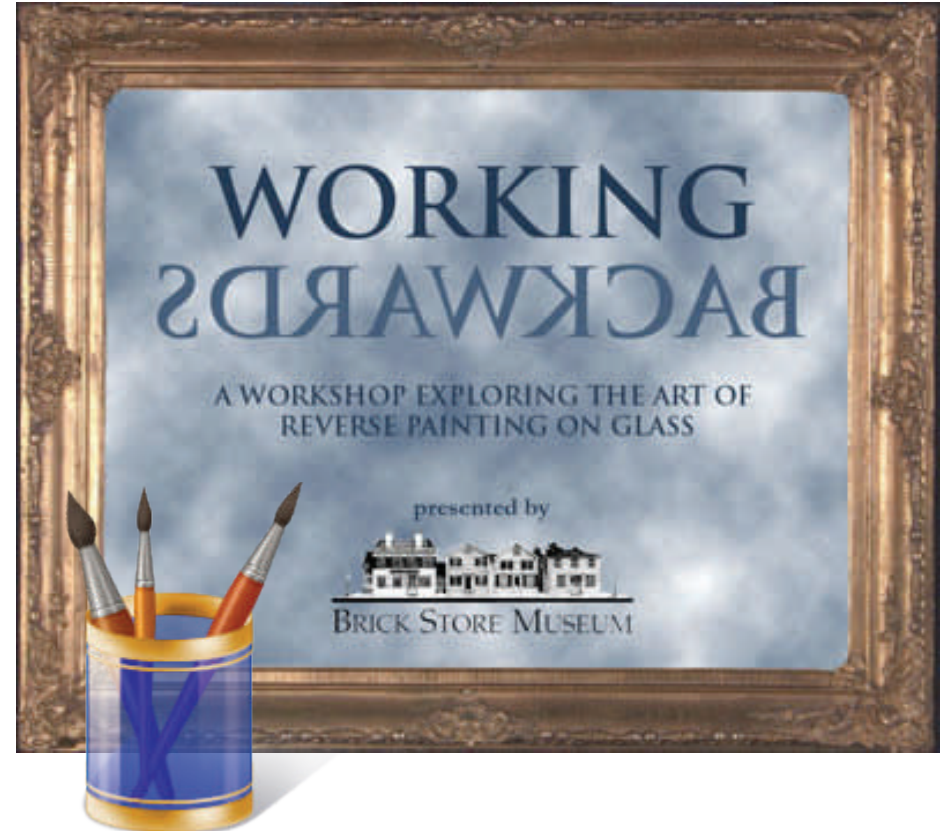
Special Instructions/Allergies? \_\_\_\_\_

Please note and complete the following: *Photos will be taken of Working Backwards activities for the Museum's publicity and/or archival purposes.*

Circle one:

I **(do / do not)** wish to have the above-named participant(s) photographed.

Authorized signature \_\_\_\_\_



A HALF-DAY, INTERGENERATIONAL  
HANDS-ON HISTORY WORKSHOP  
FOR PARTICIPANTS AGES 7 TO 107!

SATURDAY, APRIL 19, 2008  
FROM 9AM TO NOON

## Spend a half-day at The Brick Store Museum exploring and experiencing local history!

117 Main Street, Kennebunk, 207-985-4802  
www.brickstoremuseum.org



Saturday, April 19, 2008, from 9AM to noon.  
*Note: Activities end 15 minutes prior to the end of the session so that families and the general public can view the participants' projects on display in the Museum.*



For ages 7 to 107. Sign up on your own, or with a friend, parent or grandchild!



\$15 per participant (\$12 per participant for Museum members) includes a snack, personalized instruction, handouts and all supplies.

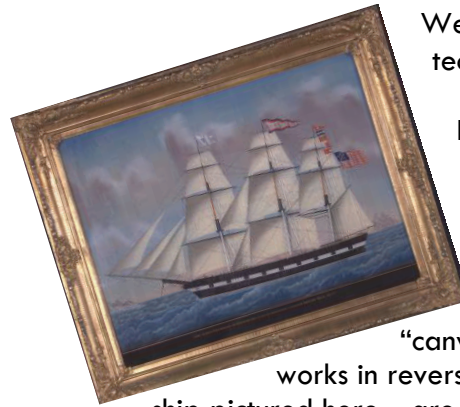


Registration is limited and on a first-come, first-served basis.

*Working Backwards* is made possible by a grant from The Virginia Hodgkins Somers Foundation and has been planned by The Brick Store Museum's Education Committee:

Tracy Baetz, Jackie Campbell, Gloria Day, Faye Denniston, Stephanie Limmer, Mimi Malkasian, Adrienne Noble, Cheryl Price, Janet Wolf

## What will the workshop be like?



We'll be learning about a special painting technique: reverse painting on glass.

Reverse painting on glass is an interesting and popular art form dating back many centuries, frequently appearing as miniatures or as decorative inlays for pieces like clocks and mirrors. The artist's "canvas" is the glass itself, and the artist works in reverse. Fine details—like the rigging in the ship pictured here—are applied first. Layer by layer, the image fills in, with the background painted last. It takes some getting used to, but the results are stunning!

Participants will view five different examples of reverse painting found in the Museum's collections and will then be able to choose from those designs to create their very own framed, reverse painting on glass.

At the conclusion of the workshop, participants can temporarily display their heirloom pieces in the museum before taking them home with them.

## What do I need to remember, bring and wear?

*Remember* to sign up early so you will get one of the limited spaces available. *Bring* your enthusiasm and imagination! *Wear* comfortable clothes, and in keeping with our theme—if you so desire—wear one thing *backwards!* We look forward to seeing you on April 19th!

